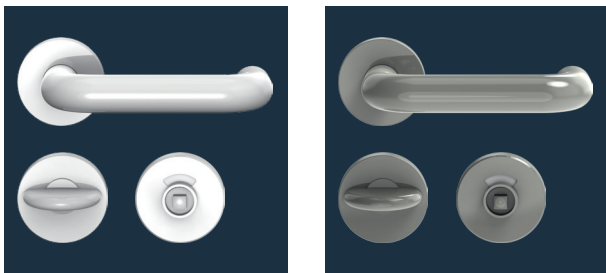
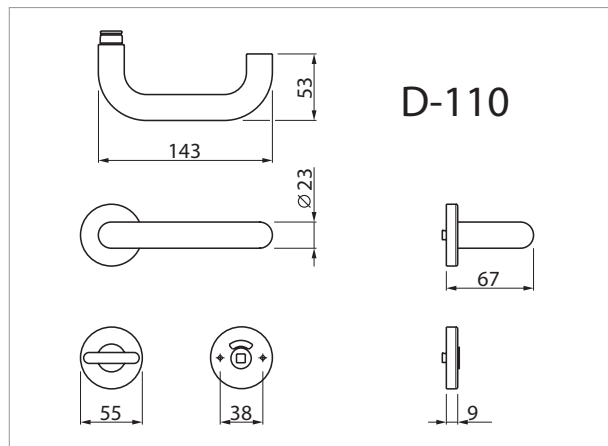


Product characteristics		
Use category class 4	<b>EN 1906</b>	-
Continuous steel core in lever handle		■
Lever handle diameter	23 mm	■
Nylon substructure with support cams		■
Lever handle with fixed bearing		-
Square pin	7 mm	□
	8 mm	■
	8.5 mm	□
Concealed, continuous screw connection		■
■ Yes   - No   □ On request		

**Product description**

- Available for all common panel and door thicknesses
- Complete with WC escutcheon and red/white indicator
- Emergency opening via 8 mm external spindle
- External release slot on request
- Also available in BB, PZ and knob/lever models
- Other colours on request
- Compatible drilling template available (art. no.: 5030026022)



	Colour/Material	∅	▣	Door thickness	Model	Art. no.
<b>D-110.Ku.DD.WC</b>	White RAL 9010	23 mm	8 mm	25-30 mm	AV	5030011382
<b>D-110.Ku.DD.WC</b>	Dark grey RAL 7030/7038	23 mm	8 mm	25-30 mm	AV	5030011394