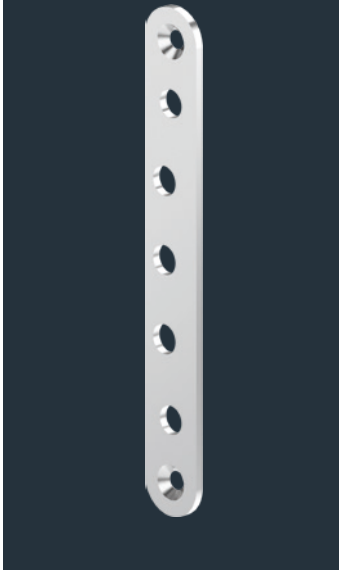
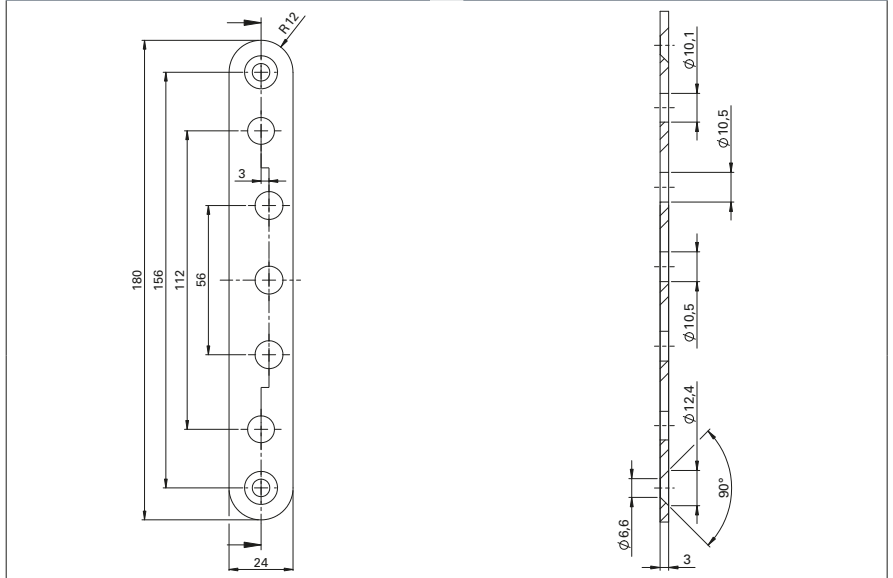


**OBX-3180**

**Dimensional drawing**


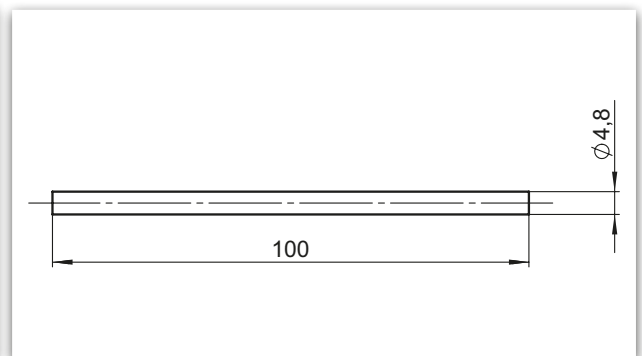
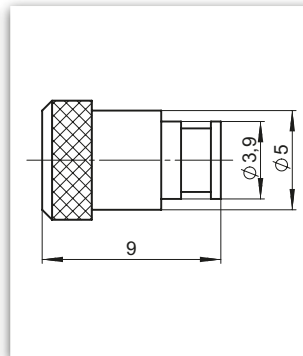
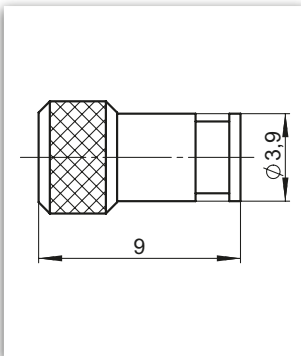
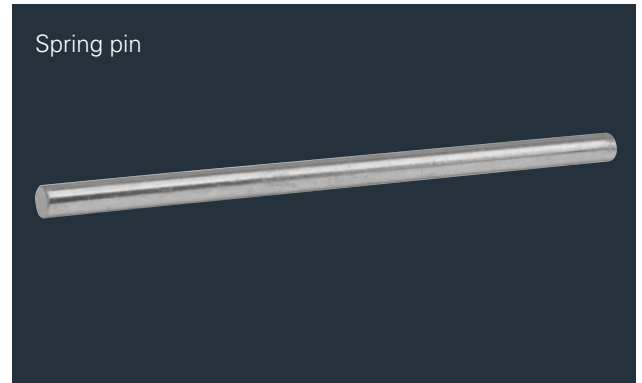
Cover plate OBX-3180	Material	Description	Art. no.
OBX-3180.ER	ER	Cover plate for OBX frame boxes made of stainless steel	5030061187

**OBX-6012**

**Load-bearing stud**

The use of load-bearing studs is recommended for additional stabilisation of the hinge plates, depending on the area of application, design and load on the door. Load-bearing studs relieve the load on the fixing screws and stabilise the hinge plates in the door frame. The load-bearing studs transfer any forces into the stabilised frame so the forces can be better absorbed. The load-bearing stud is thus only for stabilisation, not for increasing the load-bearing capacity.

Load-bearing stud for stabilising the hinge plates	Material	Hole pattern	Art. no.
OBX-6012.St.Zk	St.Zk	for 7-point hole pattern	5030016606



Locking pin 3 mm  
for 3 mm spring hinge set

Locking pin 4 mm  
for 4 mm spring hinge set

Spring pin

Locking pin	Material	Art. no.
Locking pin 3/4 mm	St.Zk	On request

Spring pin	Material	Art. no.
Spring pin	St.Zk	On request

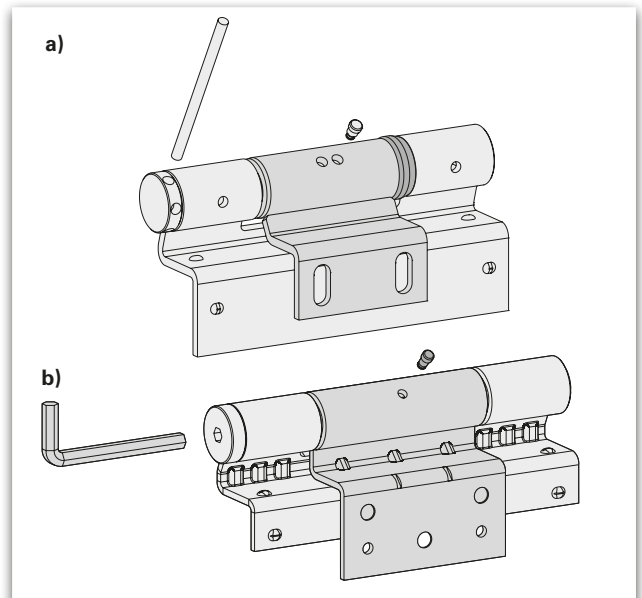
Locking pin	Material	Art. no.
Locking pin 3/4 mm	St.Zk	On request

### Tensioning and fixing spring hinges

Fire doors are equipped with one spring hinge and one KO hinge from the factory. In order to dismantle the door leaf, the hinge bolts have to be expelled to the door centre. If the spring hinge is tensioned, the locking pin must be removed first.

To tension the spring hinge with the door leaf closed, either insert

- a) the spring pin into one of the drill holes or
- b) an Allen key size 6 into the hexagon socket of the spring hinge head and tension the spring by turning away from the door leaf and holding it in tensioned position by inserting the locking pin into one of the drill holes in the middle hinge knuckle. The pre-tension has to be adjusted so that the door leaf closes automatically from an opening angle of approx. 30°.



**ECO Schulte GmbH & Co. KG**

Iserlohner Landstraße 89

D-58706 Menden

Telephone +49 2373 9276 - 0

Telefax +49 2373 9276 - 40

[info@eco-schulte.de](mailto:info@eco-schulte.de)

[www.eco-schulte.de](http://www.eco-schulte.de)

Our compendium represents a compilation of all products from our range of services. These are subject to different delivery classes. Special variants included are often manufactured to customer specifications and sometimes require longer delivery times and minimum purchase quantities. Further advise can be given by your contact person.

## ■ SYSTEM TECHNOLOGY FOR THE DOOR

